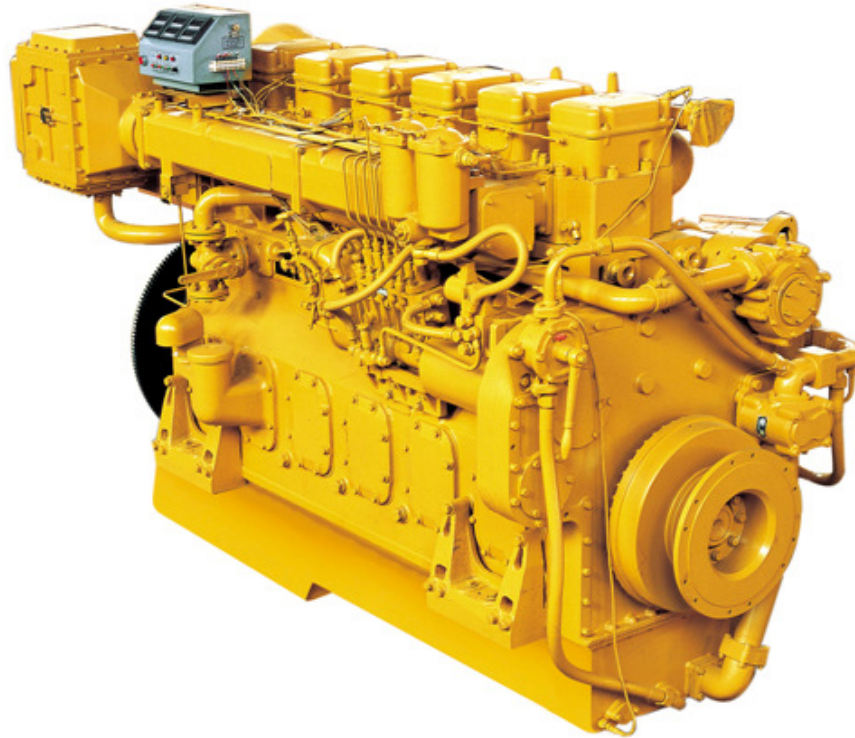


# 6190 Series

## MARINE

450 kW - 540 kW  
603 HP - 724 HP

**JDEC** 船用柴油机  
MARINE DIESEL ENGINES



### ENGINE SPECIFICATIONS OF B6190 & G6190

<b>Configuration</b>	In-Line 6 Cylinder, 4-Stroke Diesel
<b>Type</b>	Direct Injection, Water-cooled, Turbocharged and Aftercooled
<b>Bore &amp; Stroke</b>	190 mm x 210mm
<b>Displacement</b>	35.73L
<b>Compression Ratio</b>	B6190 (14:1) & G6190 (14.5:1)
<b>Direction of Rotation</b>	Counter-Clockwise or Clockwise
<b>Starting Method</b>	Electric Motor or Air Motor

### POWER RATING

Engine Model	Maximum Rated Power 1,450 RPM		Continuous Rated Power 1,300 RPM	
	kW	HP	kW	HP
B6190	450	603	400	536
G6190	540	724	480	643



**KHIN NAM HUAT LTD., PART.**  
40 Soi Udomsuk 29 Sukhumvit, Bangjak, Prakanong, Bangkok 10260  
Tel. 066-0-2399-3864-9 Fax. 066-0-2398-4378, 066-0-2749-5483  
www.knhgroup.com Email : khinnamhuat@knhgroup.com

# 6190 Series

## MARINE

450 kW - 540 kW

603 HP - 724 HP

**JDEC** 船用柴油机  
MARINE DIESEL ENGINES

### STANDARD FEATURES

#### Engine Design

Rugged in-line six cylinder configuration. Extra large cylinder displacement with low-speed revolution for extra heavy-duty usage. Four cycle design for quiet, fuel efficient operation. Replaceable wet cylinder liners for longer life and lower rebuild costs. Individual, 4 valve design cylinder heads for improved economy and performance. Oil cooled pistons (G6190) for added durability and performance. Options of counter-clockwise or clockwise rotation

#### Starting Method

Option of Electric Motor or Air Motor

#### Air System

Top mounted Turbocharger with Aftercooled Marine grade air cleaner

#### Fuel System

Dependable fuel system with single spin-on fuel filter

#### Lubrication System

Marine grade lube oil pan with both spin-on oil filters and centrifugal cleaner for higher optimal performance and service

#### Electrical System

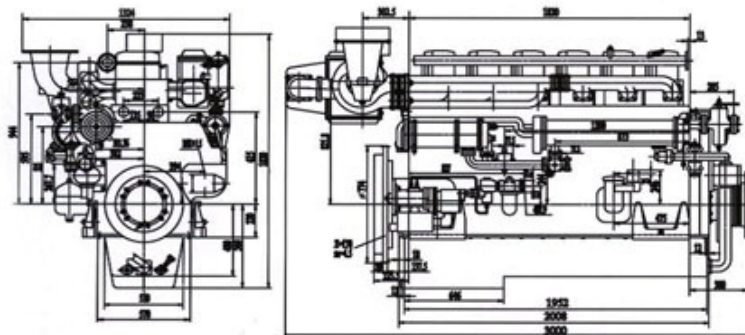
24 volt standard electrical system with instrumental controls and gauges with option installation on left or right of engine

#### Warranty

KNH provides a full line of brand new and high quality products. Each and every unit is strictly factory tested. Warranty is according to our standard conditions: 12 months or 1,500 running hours, subject to earlier one.

### FUEL CONSUMPTION & DIMENSION & WEIGHT

Engine Model	Fuel Consumption (g/kW.h)	Overall Dimension L x B x H (mm)	Net Weight (kg)
B6190	≤ 204	3000 x 1324 x 1820	3960
G6190	≤ 204	2995 x 1259 x 1754	4500



**KHIN NAM HUAT LTD., PART.**

40 Soi Udomsuk 29 Sukhumvit, Bangjak, Prakanong, Bangkok 10260

Tel. 066-0-2399-3864-9 Fax. 066-0-2398-4378, 066-0-2749-5483

www.knhgroup.com Email : khinamhuat@knhgroup.com